

GPS Real-Time Vehicle Tracker 2011

Retail Price: **RM1750**

SPECIAL FEATURES:

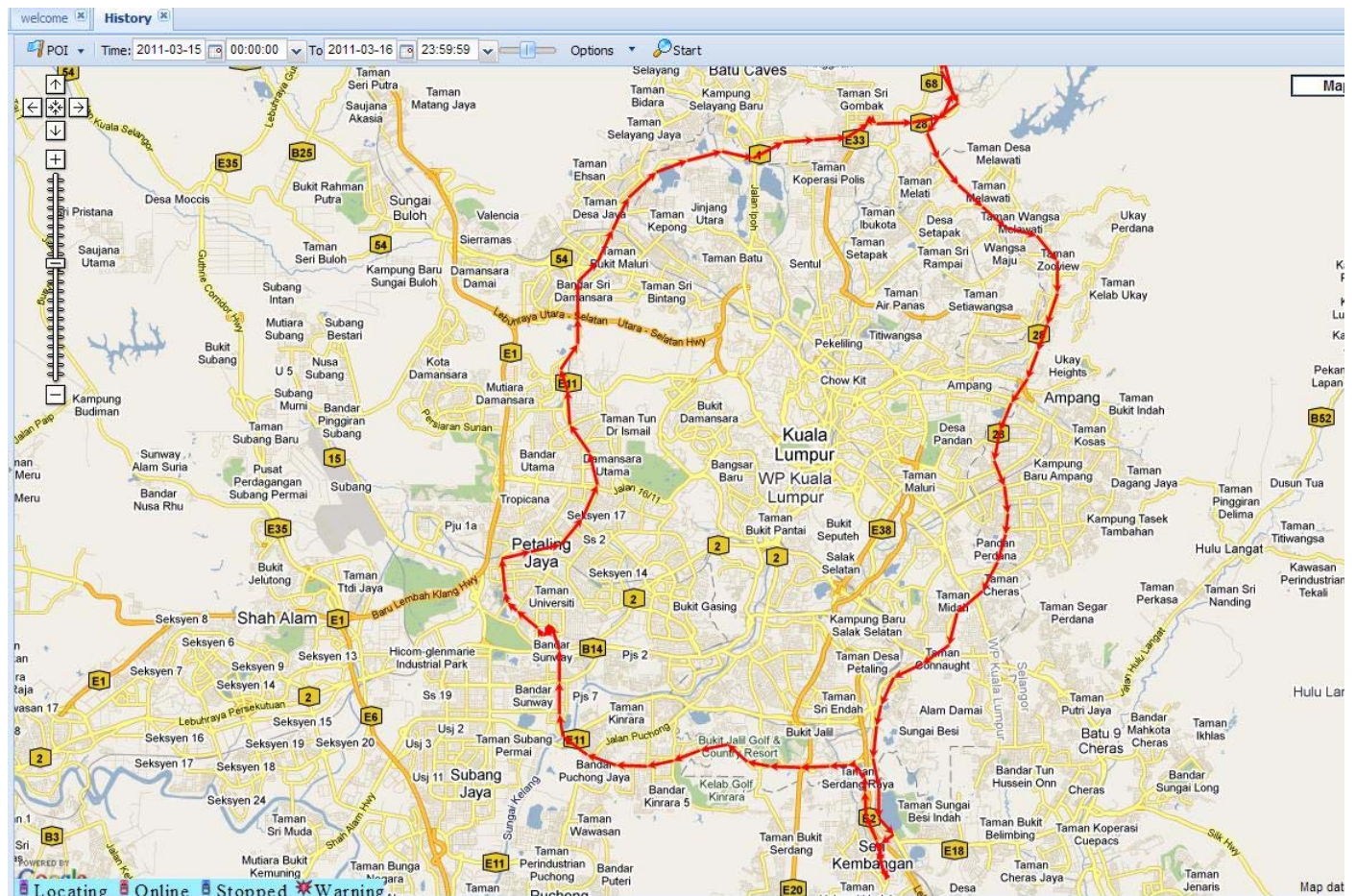
- This is an All New, the latest **Web-Based** (using **Internet Browsers** such as Internet Explorer, Mozilla), **Real-time GPS Vehicle Tracking Device**, using **Google Maps** (Satellite, Map or Hybrid view).
- **Fast Real-time GPS Tracking** with **History Replay** is now made possible as UPRO-Lite Trackers are locally hosted in our Sunway office in Malaysia.
- **Intelligent Power Management**, keep device **stable**, No device hang, No module short circuit
- Durable design, **High sensitive SIRF III** Chipset
- **GSM 850/900/1800/1900 MHZ**, Dual Band or Quad Band, HUAWEI Industrial module.



- **Live Demo** available upon request **GPS Vehicle Tracker Model : U-Pro Lite**
- **Ignition Notification, Panic button, SMS Alert, SMS Tracking** with replied GPS Location in "Address" format:

Example: 2-20, Jalan PJS 9/2, Bandar Sunway, 46150 Petaling Jaya, Selangor, Malaysia

- **Immobilization of vehicle by SMS** or by Authorized user(s) from the Real-Time Monitoring Website
- **Mileage calculation, Rectangular Geo-fencing, Comprehensive Activities Report**
- **Live DEMO** <http://gpsmalaysia.dyndns.org/login.aspx> **UserName: demo Password: leading**



More GPS Tracks Samples are available: click on www.leading.my/download/UDT/Elek/UDT_Elek_Trak1a.JPG

To see more Tracks, please **replace 1a** with 1b, 2a, 2b, 3a, 3b, 4a, 4b, 5a, 5b, 6a, 6b, 7a, 7b, 8a or 8b

GPS Vehicle Tracker (Model: U-PRO Lite) Specifications	
GSM module	Huawei GTM900, GSM 850/900/1800/1900, Support dual-band or quad-band
GPS Chipset	SIRF-Star III chipset
GPS Sensitivity	-159dBm
GPS Frequency	L1,1575.42MHz
C/A Code	1.023MHz chip rate
Channels	20 channel all-in-view tracking
Position Accuracy	10 meters, 2D RMS
Velocity Accuracy	0.1 m/s
Time Accuracy	1 us synchronized to GPS time
Datum	WGS-84
Reacquisition	0.1 sec.,average
Hot start / Warm start / Cold start	1 sec.,average / 38sec.,average / 42sec.,average
Altitude Limit	18,000 meters (60,000feet) max.
Velocity Limit	515 meters/second (1000knots) max.
Acceleration Limit	Less than 4g
Jerk Limit	20m/sec
Operating temperature	-25°C to 70°C
Humidity	5% to 95% Non-condensing
Atmospheric Pressure	86~106KPa
Voltage	Rechargeable 1300 mAh battery (3.7V)
Power Supply	DC 10-36V (applicable for vehicle with 12V/24V storage battery)
Dimension	95mm×63mm×33mm
Weight	250g
Typical Applications	GPS Vehicle Tracking, Fleet management and Asset Management

Imported and Distributed by

Leading Distribution (M) Sdn Bhd

10A, Jalan PJS9/2, Bandar Sunway, Petaling Jaya, 46150, Selangor, Malaysia.

Tel: (03) 5631-5628, (017) 888-9932 **Fax:** (03) 5631-5633.

Website: www.leading.com.my **E-Mail:** benlim@leading.com.my